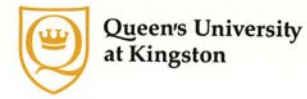


iii Sessional Dates	29 Courses of Study
1 History of the University	29 Course Weights
5 The Faculty of Education	29 Foundational Studies
5 Duncan McArthur Hall	30 Educational Psychology
7 Administrative Staff	30 History and Philosophy of Education
8 Faculty	33 Educational Contexts
12 Education Programs	36 Curriculum
12 Primary-Junior Program	36 Primary-Junior Program
12 Junior-Intermediate Program	37 Junior-Intermediate Program
12 Intermediate-Senior Program	43 Intermediate-Senior Program
12 Technological Studies Program	48 Technological Studies Program
12 Alternative Programs	48 Professional Skills
13 Artist in Community	48 Practicum
13 Cooperative Program in Outdoor and Experiential Education	48 Student Teaching
15 Early Primary Education	49 Service Learning Practicum
15 Application for Admission - Consecutive Programs	50 School Law and Policy
16 English Language Requirement	50 Special Studies
16 Admission Requirements - Consecutive Programs	58 Continuing Education Program
18 The Program Components	62 The Master of Education Program
20 Primary-Junior Program Components	63 Financial Assistance
20 Junior-Intermediate Program Components	63 Fees
21 Intermediate-Senior Program Components	63 Scholarships, Bursaries and Financial Assistance
21 Technological Studies Program Components	69 Academic Facilities and Student Services
22 Concurrent Teacher Education	75 Associate Boards
23 Certification	
24 Further Qualification	
24 Academic Regulations	
25 Grading System	
27 Code of Conduct	
28 Hiring and Placement	

This Calendar is published some months before the opening of the session. Courses and regulations will probably be as announced, but the University reserves the right to make changes without prior notice.

4 Orientation Week begins for Concurrent, Year 1 candidates
7 All B.Ed. and Dip.in Tech.Ed. and Concurrent Final Year candidates meet in the Auditorium of Duncan McArthur Hall at 9:30 am
8 Registration for Concurrent Year 1 candidates (10 am-3 pm) Registration in the Jock Hartly Arena, Division Street entrance for B.Ed. and Dip.in Tech. Ed. candidates and for Concurrent Final Year candidates
8,9,12 Authorization of programs for Concurrent Year 2 candidates and for the Arts and Science courses for Concurrent Year 3 candidates
12 Fall Term classes begin
14 Registration for Concurrent Year 2 and Year 3 candidates
30 Last date for adding a full year course or Fall Term course without approval of the Associate Dean
October
10 Thanksgiving Day
12 Federation Day
17-28 Student Teaching
28 Last date for dropping a Fall Term course
29 Fall Convocation
November
11 Remembrance Day Service (classes cancelled from 10:30 am to 11:30 am)
21-30 Student Teaching
December
1-2 Student Teaching
16 Fall Term ends
January 1989
9 Winter Term classes begin
13 Last date for adding a Winter Term course without approval of the Associate Dean
27 Last date for dropping a full year course or a Winter Term course
February
13-28 Student Teaching
March
1-10 Student Teaching
13-17 Winter Break
24 Good Friday
April
24-28 Student Teaching
28 Winter Term ends



QUEEN'S

Faculty of Education 1988-89

JoAnn

June	2 Convocation - B.Ed., Dip.in Tech.Ed., and Concurrent Final Year
July	3 Summer Term classes begin

1988

May	June	July	August
1 2 3 4 5 6 7	1 2 3 4	1 2	1 2 3 4 5 6
8 9 10 11 12 13 14	5 6 7 8 9 10 11	3 4 5 6 7 8 9	7 8 9 10 11 12 13
15 16 17 18 19 20 21	12 13 14 15 16 17 18	10 11 12 13 14 15 16	14 15 16 17 18 19 20
22 23 24 25 26 27 28	19 20 21 22 23 24 25	17 18 19 20 21 22 23	21 22 23 24 25 26 27
29 30 31	26 27 28 29 30	24 25 26 27 28 29 30	28 29 30 31

September	October	November	December
1 2 3	1 2 3 4 5 6 7 8	1 2 3 4 5	1 2 3
4 5 6 7 8 9 10	2 3 4 5 6 7 8 9 10 11 12 13 14 15 16 17 18 19 20 21 22 23 24 25 26 27 28 29 30 31	6 7 8 9 10 11 12 13 14 15 16 17 18 19 20 21 22 23 24 25 26 27 28 29 30	4 5 6 7 8 9 10 11 12 13 14 15 16 17 18 19 20 21 22 23 24 25 26 27 28 29 30 31

1989

January	February	March	April
S M T W T F S S	S M T W T F S S	S M T W T F S S	S M T W T F S S
1 2 3 4 5 6 7	1 2 3 4	1 2 3 4	1
8 9 10 11 12 13 14	5 6 7 8 9 10 11	5 6 7 8 9 10 11	2 3 4 5 6 7 8 9
15 16 17 18 19 20 21	12 13 14 15 16 17 18	12 13 14 15 16 17 18	9 10 11 12 13 14 15
22 23 24 25 26 27 28	19 20 21 22 23 24 25	19 20 21 22 23 24 25	16 17 18 19 20 21 22
29 30 31	26 27 28	26 27 28 29 30 31	23 24 25 26 27 28 29 30

May	June	July	August
1 2 3 4 5 6	1 2 3	1	1 2 3 4 5
7 8 9 10 11 12 13	4 5 6 7 8 9 10	2 3 4 5 6 7 8	6 7 8 9 10 11 12
14 15 16 17 18 19 20	11 12 13 14 15 16 17	9 10 11 12 13 14 15	13 14 15 16 17 18 19
21 22 23 24 25 26 27	18 19 20 21 22 23 24	16 17 18 19 20 21 22	20 21 22 23 24 25 26
28 29 30 31	25 26 27 28 29 30	23 24 25 26 27 28 29 30	27 28 29 30 31

September	October	November	December
1 2	1 2 3 4 5 6 7	1 2 3 4	1 2
3 4 5 6 7 8 9	8 9 10 11 12 13 14	5 6 7 8 9 10 11	3 4 5 6 7 8 9
10 11 12 13 14 15 16	15 16 17 18 19 20 21	12 13 14 15 16 17 18	10 11 12 13 14 15 16
17 18 19 20 21 22 23	22 23 24 25 26 27 28	19 20 21 22 23 24 25	17 18 19 20 21 22 23
24 25 26 27 28 29 30	29 30 31	26 27 28 29 30	24 25 26 27 28 29 30

History of the University

Queen's University at Kingston owes its origin to the desire of the Synod of the Presbyterian Church in Canada for a ministry trained within the country, and for educational opportunity for the youth of a growing economy. As early as 1832 the Provincial Government had been petitioned to endow without delay an institution, or professorships, for the education and training of young men for the ministry in connection with the Synod. This and other representations failing of their object, steps were taken by the Synod to found a college at Kingston on the lines of the Scottish National Universities. On 16 October, 1841, a Royal Charter was issued by Her Majesty, Queen Victoria, for the establishment of Queen's College, Kingston, and the first classes were opened in March, 1842, with the Reverend Dr. Liddell as Principal. Funds were provided in part by grants from the Presbyterian Church in Scotland and from the Canadian Government, and in part by liberal subscriptions from the friends of the young and growing University. The lack of good schools in the Province made it necessary to have at first a preparatory school in connection with the college. In spite of many difficulties and straitened circumstances, the progress was steady and financial difficulties were tidied over by the unwearied efforts of the early friends of Queen's. In 1867-68, the withdrawal of the Provincial grant and the failure of the Commercial Bank, almost brought financial disaster. The crisis was met by the determination of Principal Snodgrass and other self-denying workers, chief among whom was Professor Mackerras. The country was canvassed for subscriptions and as a result of the widespread interest aroused, \$113,000 was added to the endowment. In 1877, Principal Snodgrass was succeeded by the Reverend G.M. Grant, who for a quarter of a century built with brilliant success upon the foundations laid by his predecessors. Under him the University gained rapidly in size and prestige. By 1881 Queen's had a new building, an enlarged staff and a great increase of students. In 1887, as the result of an effort in commemoration of Queen Victoria's Golden Jubilee, \$250,000 was raised, resulting in further extension and in the establishment of new professorships. Principal Grant died in 1902 and was succeeded in the following year by the Very Reverend D.M. Gordon. In 1916, because of ill-health Principal Gordon resigned his position, but continued in office until the autumn of 1917, when the Reverend R. Bruce Taylor was appointed his successor. In 1930 Principal Taylor resigned to live abroad and Dr. J.C. Connell was appointed Acting Principal. He held this position for four months, until October, when W. Hamilton Fyfe, Headmaster of Christ's Hospital, England, and formerly Fellow of Merton College, Oxford, was installed as Principal of the University. Dr. Fyfe resigned in 1936 to accept the Principalship of the University of Aberdeen. He was succeeded by Principal R.C. Wallace, President of the University of Alberta from 1928 to 1936. Dr. Wallace retired in September 1951 and was succeeded by Principal William A. Mackintosh, the first Queen's graduate to hold the Principalship. In 1961, by Act of Parliament, the positions of Vice-Chancellor and Principal were separated and Dr. Mackintosh became Vice-Chancellor. He was succeeded as Principal by Vice-Principal J.A. Corry, who since 1936

Faculty of Education Calendar 1988-89

Queen's University
Duncan McArthur Hall
Union St. at Sir John A. Macdonald Blvd.
Kingston, Ontario K7L 3N6
Telephone: 545-6205

informally for the social interaction which is one of the characteristic features of this faculty.

Just north of Duncan McArthur Hall is John Orr Tower, a 16-storey high-rise containing 124 one-bedroom apartments. Most of the apartments overlook Lake Ontario, the old village of Portsmouth, and the harbour site of the 1976 sailing Olympics.

Students are able through the integrated building complex to become part of a very closely knit faculty where all the resources are at hand for effective teacher education. Duncan McArthur Hall has become a little campus in itself, a very human place which combines living and learning.

Accommodation for married students is available also in the Married Students Quarters, located on Sir John A. Macdonald Boulevard, a short distance from Duncan McArthur Hall.

Information concerning University Residences as well as application forms can be obtained from Residence Admissions, Victoria Hall, Queen's University, Kingston. Married students should contact the Housing and Property Management Office, Queen's University, Kingston, Ontario. Accepted students are sent application forms.

A set number of rooms in Jean Royce Hall will be held for students of the Faculty of Education until 1 August. For this reason, students who wish accommodation in this residence should apply as soon as possible.

Administrative Staff - 1988-89

- Park, P.B., B.A. (Queen's), M.Ed. (Toronto)
Dean, Faculty of Education
To be announced
Associate Dean, Program
To be announced
Associate Dean, Field Relations
To be announced
Coordinator of Graduate Studies and Research
Casey, S.S., B.A. (McGill), M.Ed. (Queen's)
Education Librarian
Fraser, J.A., B.A. (McGill), M.Ed. (Queen's)
Assistant Education Librarian
Sedgewick, K.H., B.A. (McMaster), M.Ed. (Toronto)
Chair - Arts
Watson, P.H., B.A. (Queen's), M.A. (Acadia)
Chair - Communications and Social Sciences
Rees, R., B.A. (McGill), M.Ed. (Queen's)
Chair - Educational Contexts
Campbell, D.S., B.A. (Washington and Lee), M.A. (North Carolina), Ed.D. (Indiana)
Chair - Curriculum Studies
Schirall, M.G., B.A. (Queen's College, New York), M.A., Ph.D. (Boston)
Chair - Psychology and Philosophy
Talsnick, I., B.A. (McGill), M.Ed. (Queen's)
Chair - Science, Mathematics and Technical Education
Fisher, R.
Administrative Assistant - Technological Studies
Gargano, B.A.
Assistant to the Dean
Nieman, J.U.
Administrative Assistant - Office of the Assistant Registrar
Poole, L.C., B.A. (Queen's)
Assistant Registrar
Travers, A., B.A. (McGill), Queen's
Administrative Assistant - Hiring and Placement
Walker, T.
Supervisor, Support Services

had been the Hardy Professor of Political Science and since 1951, the Vice-Principal of the University. In 1965 on the retirement of Dr. Mackintosh, Principal Corry was named Vice-Chancellor and Principal. Principal Corry was succeeded in September 1968 by Dr. J. Deutch who had had a distinguished career in Economic Research, in Government Service, in University teaching at both Queen's and the University of British Columbia, as Vice-Principal of Queen's from September 1959 to September 1963, and as Chairman of the Economic Council of Canada from October 1963 to September 1967. On his retirement in 1974, Dr. Deutch was succeeded by Dr. Ronald Lampman Watts, Rhodes Scholar and political scientist well known for his work in the area of federalism. He served as Dean of the Faculty of Arts and Science at Queen's from 1969 to 1974. In 1984, Dr. Watts was succeeded as Principal by distinguished economist David Chadwick Smith. A renowned scholar, teacher and government adviser on public policy, Dr. Smith joined the Department of Economics at Queen's in 1960 and served as Department Head from 1968 to 1981.

In 1864 the Medical Faculty of Queen's was established. It was re-organized in 1865 as the Royal College of Physicians and Surgeons in affiliation with the University but in 1891 the original status was resumed.

The Faculty of Law opened in 1861 and closed in 1864; it reopened in 1880, and closed in 1883. It was restored with the approval of the Law Society of Upper Canada under new arrangements whereby the Law Society accords to approved university faculties of law an equal position with the Society's own school at Osgoode Hall.

As early as 1870 special classes in English and other subjects were formed for women but courses leading to a degree were not opened to them until 1878-79. In 1880 co-education was extended to the medical program, and in 1883 a separate Women's Medical College was opened and affiliated with Queen's. It was closed in 1894, as similar facilities were offered in Toronto and elsewhere. In 1943, for the first time in forty-nine years women were again admitted to the Faculty of Medicine. In the same year the Faculty of Applied Science admitted women for the first time.

Graduate work at Queen's University was established formally in 1889 with the adoption of regulations for the Ph.D. and D.Sc. degrees. At that time the degree of M.A. was not a graduate degree, but was given in accordance with the old Scottish pattern on the completion of Honours work in certain programs provided the candidate had first class standing. With the introduction of a new system of undergraduate studies in 1919, however, a Master's program was set up requiring a year of work beyond the B.A. and prescribing advanced courses and a thesis or other piece of independent work.

In 1941, the Faculty of Arts organized a formal Committee on Graduate Studies and in 1943 the Senate set up a University Board of Graduate Studies. In 1963 the School of Graduate Studies was established. In 1969, the School of Graduate Studies initiated a program leading to the Master of Laws Degree; in 1970, programs leading to a Master's Degree in Public Administration and in Urban and Regional Planning; in 1971, a program leading to a Master's Degree in Education; and, in 1974, a program leading to a degree of Master of Art Conservation was implemented.

The School of Mining was founded in 1893 under an Ontario charter and was under the control of a separate Board until 1916 when it was amalgamated with the University, and now constitutes the Faculty of Applied Science.

In 1907 the Ontario Government established at Queen's a Faculty of Education for the purpose of providing professional training for teachers in the secondary school in the Province. In 1920 the work of the Faculty was discontinued because of the decision of the Government to extend the scope of the normal schools and to create in Toronto, the Ontario College for Teachers. In 1965, by agreement with the Department of Education, it was decided to establish a Faculty of Education at Queen's University. The new building now occupied by the Faculty is named in honour of Duncan McArthur, Head of the Department of History at Queen's University from 1922 to 1934, and subsequently Minister of Education for the Province of Ontario from 1940 until his death in 1943. The Faculty of Education opened in 1968 offering programs to university graduates leading to the B.Ed. degree and to teaching certificates valid in the secondary and elementary schools of Ontario, and such other courses leading to Qualification of teachers as may be determined jointly by the Minister of Education and the University.

In 1971 a Graduate Program leading to the M.Ed. degree was introduced. Also in 1971 candidates were admitted to a program leading to the Diploma in Technical Education and qualification to teach in the technical departments of secondary schools. In 1973, with the closing of the Peterborough Teacher's College and the transfer of the faculty to Queen's through an agreement with the Ministry of Education, the Faculty of Education undertook an augmented role in the preparation of elementary teachers. A Concurrent B.A./B.Ed. and B.Sc./B.Ed. program was instituted in 1975 whereby candidates pursue an Arts and Science degree concurrently with an education degree. An earlier agreement with Trent University with respect to Concurrent Education was approved in 1974. Through this inter-university cooperation students pursue academic and education courses at Trent for three or four years and complete requirements for a Trent Arts and Science degree and a Queen's B.Ed. degree during the final year. This program was renewed in 1979.

The Commerce program was established in 1919. In 1960 the program leading to the Degree of Master of Business Administration was introduced and the name of the School of Commerce and Business Administration was changed to School of Business. In 1963 the Board of Trustees established a separate Faculty Board for the School of Business. The School of Nursing began in 1942, the School of Physical and Health Education in 1947, and the School of Rehabilitation Therapy in 1967. In 1958 the Faculty of Arts became the Faculty of Arts and Science. New programs are continually developed within faculties to fill changing needs and interests, such as, the programs leading to degrees of Bachelor of Music and Bachelor of Fine Art (formerly Bachelor of Art Education) offered by the Faculty of Arts and Science in 1969, and the program in French language, Translation, French Canadian Studies all now offered in the Faculty of Arts and Science.

Faculty 1988-89

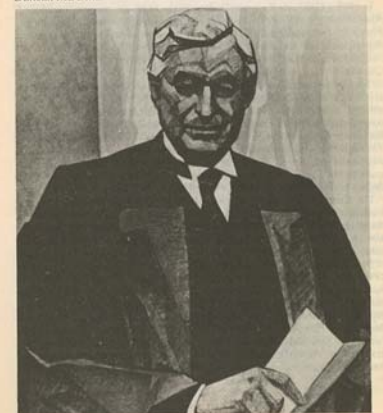
- Allen, H.A.J., B.Sc., M.A. (Queen's), Ph.D. (Yale)
Associate Professor - Mathematics
Ambury, G.G., B.A., M.Div. (Queen's), M.A. (Sydney)
Assistant Professor - Human Dimensions in Teaching and Learning
Bailey, J.C., B.A. (Queen's), M.A. (Sydney)
Professor - Language Arts
Balanchuk, M.L., B.A. (Queen's), M.Ed. (Toronto)
Professor - Guidance and Service Learning
Berrill, D., B.A., M.A. (Toronto)
Lecturer - Queen's Trent Program
Bloom, J.W., B.S. (Catholic College), M.Ed., Ed.D. (Houston)
Assistant Professor - Science
Brickett, G., B.A. (Queen's), M.Ed. (Ontario)
Assistant Professor - Language Arts
Bull, D., B.A. (Queen's)
Assistant Professor - Art
Campbell, D.S., B.A. (Washington and Lee), M.A. (North Carolina), Ed.D. (Indiana)
Associate Professor - Educational Technology and Psychology
Chair - Curriculum Studies
Cowan, D.A., B.A., M.Ed. (Bibbings State College)
Assistant Professor - Art
Crawford, D.H., B.Sc., M.A., M.Ed. (Calgary), Ph.D. (Sydney)
Professor - Mathematics and Curriculum
Danby, M., B.A. (Acadia), B.Ed., M.Ed. (Queen's)
Assistant Professor - Drama in Education
Downes, W.E., B.A. (Queen's), M.Ed. (Toronto), Ph.D. (Ontario)
Associate Professor - Queen's Trent Program
Eastbrook, J.H.G., B.A., M.A. (Queen's), Ph.D. (Toronto)
Associate Professor - Sociology
Egnatoff, W.J., B.A. (Saskatchewan), M.Sc., Ph.D. (Edmonton)
Assistant Professor - Computers in Education
Freeman, R.M., B.A. (Queen's), M.A. (Minnesota), M.Div. (Wheaton), Ph.D. (Harvard)
Professor - Human Dimensions in Teaching and Learning
Heggison, W.C., B.A. (Queen's), Certificate in Education (Cambridge), M.A. (Exeter), Ph.D. (Alberta)
Associate Professor - Mathematics
Hill, A.M., B.Ed., Dip. Ed. (McGill), Ph.D. (Ohio State)
Assistant Professor - Technological Studies
Hill, R.J., B.A. (New Brunswick), M.Ed. (Toronto)
Assistant Professor - Language Arts
Hills, G.L.C., B.Ed., M.Ed., Ph.D. (Alberta)
Associate Professor - Philosophy
Horwood, R.H., B.A., M.Sc. (Queen's)
Professor - Outdoor and Experiential Education

- Hutchinson, N.L., B.A. (Trent), Dip. Ed., M.A. (McGill), Ph.D. (Simon Fraser)
Assistant Professor - Psychology
Johnston, C.F., B.A., B.Ed. (Toronto), M.A. (Sydney)
Associate Professor - Educational Technology
Kellway, J., Dip. Ed., B.A. (Brescia)
Part-time Lecturer - English, English as a Second Language
Kemp, D.E., B.A. (Queen's), M.Ed. (Bath), L.L.T.D. (London), L.U.D.D.A. (Central School of Speech and Drama), L.T.C.L., J.T.C.L. (Trinity College, London), F.R.S.A. (Professor - Dramatic Arts, Cross-appointment Arts and Science (Drama)
King, A.J.C., B.F.E. (British Columbia), M.Sc. (U.C.L.A.), Ed.D. (Toronto)
Professor - Sociology
Kirby, J.R., B.A., M.Ed., Ph.D. (Alberta)
Associate Professor - Psychology
Loken, J.O., B.Ed. (Alberta), M.Ed. (Calgary), Ph.D. (Alberta)
Assistant Professor - Sociology
MacLachlan, J., Jerns Hall College of Education, Graduate course
Associate Professor - Psychology
Mandell, A.L., B.A., B.L.S. (Queen's), Barrister and Solicitor of the Bar of Ontario
Associate Professor - Law and Philosophy
Massey, D.A., M.A. (Columbia), M.A.T. (Yale), Ph.D. (Queen's)
Professor - French and German
Mellor, W.J., B.A., B.F.E. (Queen's), M.S. (Oregon)
Professor - Physical Education
Miller, L.A., B.A. (Yale College), M.A. (Dartmouth), Ph.D. (Alberta)
Associate Professor - Reading and Language Arts
Manby, A.H., B.Sc. (Andrews), M.A., Ph.D. (Toronto)
Professor - Curriculum
Munro, I.R.M., B.A. (McMaster), M.Ed. (Queen's)
Associate Professor - Comparative Education, Social Studies Education,
O'Riordan, D.C., B.A. (London), B.Ed., M.Ed. (Alberta), Ph.D. (Michigan)
Associate Professor - Comparative Education and History of Education
O'Farrell, L., B.A. (Queen's), M.A. (Arizona State), Graduate of National Theatre School of Canada
Associate Professor - Dramatic Arts
Olson, J.K., B.A., B.Sc. (Queen's), M.Ed. (Toronto), Dip. Ed. (Oxford), Ph.D. (Birmingham)
Professor - Science
Osser, H., B.A. (Queen's), Ph.D. (Cornell)
Professor - Psychology
Park, B.H., B.A. (Western), M.Ed. (Toronto)
Assistant Professor - Language Arts
Park, P.B., B.A. (Western), M.Ed. (Toronto)
Professor - Science, Dean - Faculty of Education
Perumak, W.S., B.A. (Queen's), M.Ed. (Toronto), Ph.D. (International College, Los Angeles)
Professor - Educational Contexts

Queen's has a long history of extension work in Arts and Science; correspondence courses were started in the summer of 1889, and the Summer School was formally established in 1910. In addition, interest programs during May and June were instituted in 1972. More recently, the University has been developing in the field of continuing education; several of the Faculties have started programs in this area, and the Donald Gordon Centre for Continuing Education opened in the fall of 1974 as a residential educational seminar and conference centre. The Ban Ridge Foundation for Continuing University Education also opened in September 1974. It functions as a resource centre the purpose of which is to encourage all ages wishing to undertake university work at any level.

Queen's University, though founded by a church, was dedicated to the nation. As its constituency expanded, its constitution was gradually broadened, until finally in 1912, as a result of an amicable arrangement between the Presbyterian Church and the Trustees of the University, an act was passed by the Dominion Parliament removing the last vestige of denominational control.

Duncan McArthur



The origins of the present Faculty of Education date from an agreement in 1965 between the University and the Province, establishing a professional school to be known as McArthur College of Education. The first teacher candidates were enrolled for the 1968-69 academic year. To symbolize the full integration of the College into the University structure, it was soon decided to alter the nomenclature; in the spring of 1971, the College was formally designated as the Faculty of Education, Queen's University. The name, 'McArthur', which commemorates a distinguished Queen's historian and public servant, was reserved for the new academic-residential complex housing the Faculty, now officially known as Duncan McArthur Hall.

Over the years Queen's has made a distinguished contribution to the academic preparation of teachers for service in the schools of this province. Additionally, for a period of thirteen years, 1907-1920, Queen's offered professional preparation as well, under the auspices of its first Faculty of Education. When the training of high school teachers was centralized in Toronto in 1919, the Faculty was forced to close. The establishment of the new Faculty of Education revives, then, the tradition of professional teacher preparation at Queen's University.

Duncan McArthur Hall

The Faculty of Education is housed in an impressive educational complex known as Duncan McArthur Hall. This modern, well-equipped building provides the academic teaching facilities, the supporting services, and the administrative offices under one roof. The various teaching areas are linked by closed circuit television. A production studio and several micro-teaching studios are included in the central television services. The well-appointed library has been designed as an educational resource centre with facilities for the use of non-book materials as well as an up-to-date educational library of books and periodicals. Associated with the library is an excellent media resource and service area where students may learn to use and to make supporting media materials. An acoustically superb theatre-auditorium provides a setting for large group lectures, concerts, and dramatic productions. The complex includes its own gymnasium for teaching as well as for recreation, for both day and resident students. Modern labs, an observation studio, a language laboratory, drama studios, technical shops, and special workrooms for most subjects round out the teaching facilities.

Adjacent to and physically connected to Duncan McArthur Hall is Jean Royce Hall, a co-educational residence with accommodation for 576 students. Single rooms are arranged in groups of twelve, each group having its own lounge and kitchen for light food preparation. Jean Royce Hall has twelve 'houses' each named after Queen's men and women whose distinguished careers have left their stamp, more permanent than brick and stone, on the lives of young Queen's people.

Seven of the 'houses' nestle around a social centre which includes coffee shops, a dining room, recreation rooms, lounges, tuck shop, facilities for television viewing, and a music room. This has already become the social heart of the west campus where students and staff meet

the Technological Studies Computer Room and various classrooms. Basic, Logo and Pascal are available, as well as several educational series and utilities. For further information see Mario Whitehead, room B118, or Barbara Moore, room B307.

Performing Arts Office

The Performing Arts Office is responsible for programming performing arts events on campus. Four series are presented this season.

Two series are held in Grant Hall, the Masters, and Chamber. They feature international artists in solo and ensemble performances. Symphony orchestras are also featured.

The Theatre and Dance series are held in the Grand Theatre presenting the best professional theatre, dance and mime companies touring in Canada.

A number of additional events are presented to satisfy the increasing audience demand for quality performing arts events.

Since these events are an important part of the co-curricular education of the students at Queen's University, both the University and the Richardson Memorial Trust Fund provide subsidies that enable students to buy tickets at greatly reduced prices.

Students wishing to become involved with the presentation of performing arts events can do so by participating in related committee work and in front-of-house management.

For further information contact the Performing Arts Office in the John Deutsch University Centre (545-2557) or the Administrative Office.

Public Lectures

Through an endowment set up in honour of Charles A. Dunning, a past chancellor of Queen's University, a series of public lectures emphasizing the supreme importance of the dignity, freedom and responsibility of the individual in human society is presented each year. Distinguished persons from around the world are invited to Queen's to deliver these lectures, which are open to members of the University community and the general public free of charge.

The Agnes Etherington Art Centre

The Agnes Etherington Art Centre offers to students in all faculties a varied program of specially prepared art exhibitions, ranging from the traditional to the contemporary, throughout the year. It also houses the permanent collection of art of the University, which includes many important gifts. Selections from the collection are on exhibition and provide original source material for students of Art History. Admission to the exhibitions is free.

Supplementing the exhibition program are public lectures on art, film programs, studio workshop sessions, music recitals and other special and experimental events. The Art Centre serves not only the whole University but also the Kingston and region community and is helped by an active Gallery Association. Membership in the Association is open to all and students are specially welcome. A monthly Bulletin of Art Centre events is published and is mailed to members.

the non-credit, low cost sports skills instruction courses allow faculty users to receive expert instruction in a wide variety of physical activities which are attractive as lifetime leisure endeavours. For those seeking unstructured activities the Centre provides the opportunity to participate on an individual basis by the daily reservation of facilities for such recreational purposes as skating, jogging, swimming, squash, badminton, paddleball, racquetball and casual play. Brochures providing further information are available in the Physical Education Centre. Telephone 545-2500.

Student Services

The University has established services in a number of areas to help students deal with a variety of concerns and needs. The activities of the following services are co-ordinated through the office of the Director, Student Services Group: Career Planning and Placement, The Grey House, John Deutsch University Centre, the International Centre and the Student Counselling Service. In addition, services are also provided to students by the Co-ordinator of Services for Disabled Persons, the Day Care Centre Inc., the Dean of Women's Office, the Student Health Service and the University Residences.

Career Planning and Placement, in the St. Lawrence Building, (545-2992) offers a variety of services and information in the areas of part-time, summer and permanent job placement. An extensive collection of company files, industrial, commercial and government directories, and career files is available for student use in job search and career planning.

The Grey House is a comfortable old house located at 51 Queen's Crescent. Open to all members of the university, this home like environment can be used for meetings, as informal study space or simply as a place to meet friends and relax. Sponsored jointly by the University and the Alma Mater Society, the house accommodates the Queen's Student Community Services Group (545-2958), as well as the office of the Denominational Chaplains (545-2962).

The International Centre aims to stimulate and support the academic and personal development of students, faculty and staff through a broad range of programs and services which promote a discerning, cross-cultural awareness and sensitivity within the Queen's and Kingston communities. Activities include international student reception, orientation and counselling; international clubs; social and cultural events; development education programs and resources; and information on work, study and travel abroad. The Centre also houses the local CUSO office.

The Centre's lounge offers a comfortable setting for relaxation, reading, conversation and meeting people from other countries. Afternoon tea-time, a long-standing tradition at the Centre, is daily at 3:30 pm. (John Deutsch University Centre. Telephone 545-2604.)

Radio

CFRC, (1490 kilohertz), one of Canada's oldest AM radio stations, was first granted a broadcast licence in 1922. CFRC-FM (91.9 megahertz) was granted a broadcast licence in 1953. The stations are owned by Queen's University which finances their non-commercial operations. Programming is provided year round on a voluntary basis by the CFRC Radio Club under the guidance of the Station Manager. The stations' formats include a wide variety of music, news, sports and public affairs.

A detailed Program Guide is available on request. The stations are located in the basement of Carruthers Hall and guided tours are available for visitors.

The John Deutsch University Centre

The University Centre conveniently located at the corner of Union Street and University Avenue, is a place for the students, staff and faculty of Queen's to meet, relax and be entertained.

The facilities include four meeting rooms, a reading lounge, games room area with billiard tables, board games, electronic and pinball games, a music listening room and the Central Meeting area (the Cellih) where displays and noon hour performances are held. There are three eating facilities, two pubs as well as the following commercial outlets: The Bank of Montreal, Campus Cleaners, Ye Olde Tuck Shoppe, the College Book Merchant, and a campus hair stylist.

Other tenants include the AMS (Student Government), student newspapers and yearbook, an information centre, many student clubs and societies, the Performing Arts Office box office and the Alumni Office. Contiguous to the University Centre are the International Centre and the Graduate Student Residence.

The University Centre is here for your use - hope you enjoy it.

Athletics and Recreation

The Physical Education Centre (P.E.C.) at Queen's University serves as a recreation facility for students, faculty and staff, as a practice and playing site for men's and women's intercollegiate and intramural teams, and as a teaching facility for the School of Physical and Health Education. The Centre includes three gymnasiums, 12 indoor racquet courts, swimming pool, hockey arena with jogging track, two weight rooms, combative and projectile rooms, dance studio, and a fitness assessment centre. Outdoor facilities include a football stadium, five additional playing fields, a 400 metre all-weather track, and 16 tennis courts.

The Queen's program is committed to a broad base of philosophy which provides students with a very wide diversity of opportunity for participating at various skill levels. The 44 teams of the Men's and Women's Intercollegiate programs participate in their respective Ontario Associations and as such, students must comply with the playing rules and eligibility by-laws of those associations. The Men's, Women's and Co-Ed Intramural programs are marked by high student participation in 68 team, individual and tournament activities. The 28 recreation clubs give students a chance to try sports at a more informal level, while

The Student Counselling Service (545-2893) provides free psychological and counselling services, including individual counselling, psychological testing, and group programs for all students, staff and faculty. The Counselling Service is located at 32 Queen's Crescent.

The Office of the Co-ordinator of Services for Disabled Persons is located in Mackintosh-Corry Hall. Problems encountered by disabled students such as accommodation, location of lectures and laboratories, mobility around campus or any other areas should be brought to the attention of the Co-ordinator at 545-4560.

Queen's Day Care Centre provides day care for approximately 82 children from families of students, faculty, staff, and other members of the Kingston community. Full day care is provided for children from six months to five years of age, and a half-day program is available for children who attend kindergarten. Families interested in using the facilities are encouraged to make application as early as possible since there is usually a waiting list for the available spaces. The Day Care facilities are located at 96 Queen's Crescent and at 169 Union Street, telephone 546-6955.

The Dean of Women and her staff are available to students for conversation, as a sounding board for ideas, and to give counsel when personal problems arise. The Dean's administrative responsibilities include the Women's Residence and she works closely with student government and student organizations. Her office is in Victoria Hall and also on a part-time basis at the John Deutsch University Centre, Monday and Fridays from 11 am to 2 pm and Wednesday from 10 am to 12 noon; telephone 545-4561.

Student Health Service serves the physical and emotional health needs of all students through the Medical Clinic and Psychiatric Division, located in the St. Lawrence Building on Queen's Crescent. The service is open Monday through Friday from 9 am to 4:30 pm; telephone 545-2506. Appointments with the Psychiatric Division may be made in person or by telephoning 545-2506.

The University provides residence accommodation in single and double rooms for 1180 undergraduate men, 1383 undergraduate women and approximately 300 graduate students. In addition, 393 student apartments are provided. Information about the University's residences and off-campus accommodations is contained in the publication, *A Residence Brochure*. This brochure, a residence application form and a residence fee schedule are sent to each student who is offered admission to Queen's.

Housing Service, a division of the Office of Apartment and Housing Service, provides assistance for students interested in locating off-campus private accommodation. The Housing Service is located at 169 University Avenue, telephone 545-2502.

At the time of his death in 1960 he was principal of Petrolia District High School. Mr. Sawyer's great contribution to Federation lay in his ability to discover the basic issues in the many difficulties which arose in teacher-board relationships during his term of office and in his having a sense of humour in periods of crisis.

The value of the award is \$100 annually. The OSSTF will present the Sawyer Award to the student in regular attendance during the winter session of the Faculty of Education of Queen's University, in the Intermediate-Senior Program who, in the opinion of the Faculty Board of the Faculty of Education, has shown the most outstanding qualities of scholarship, teaching ability and character.

The John R. McCarthy Scholarship

Established in 1967 by John R. McCarthy, B.A. '43, LL.D. '67, former Deputy Minister of University Affairs and Deputy Minister of Education for the Province of Ontario. Awarded to a student graduating with at least second-class standing from either a three-year or four-year degree program in the Faculty of Arts and Science who is normally domiciled in Ontario and will be enrolling in the Faculty of Education at Queen's University in the fall session immediately following graduation. The student selected will have displayed leadership in student government and student affairs, made a personal contribution to the life of the University, shown a fondness and aptitude for sports and displayed leadership and sense of fair play in athletic endeavours.

Application by letter should be submitted to the Dean of Education by 1 May. The applicant should list two persons who have been asked to submit confidential letters of reference. The award will be made in the fall upon registration in the Faculty of Education. Value \$850.

The Ted Reeve Memorial Award

Established by friends and associates of Ted Reeve, who was a football coach and a long time friend of Queen's.

Awarded in the fall to upper-year students to recognize outstanding academic achievement and demonstrated qualities of courage, team loyalty and fair play on an intercollegiate team. Preference will be given to members of the Queen's Senior Football Team.

Application by letter should be made prior to 1 March to the Assistant Registrar (Student Awards). The applicant should list two persons who have been asked to submit confidential letters about his or her academic ability and qualification. The recipient will be chosen by a Selection Committee, including representatives of former Queen's football players, the Chairperson of the Senate Committee on Scholarships and Student Aid and an additional member of the Scholarship Committee; value at least \$1,000.

The Senator Frank Carrel Scholarships

The Senator Frank Carrel Scholarships have been established at Queen's University through the generosity of the late Senator Frank Carrel, noted publisher, executive and author who represented the Gulf Division in the Legislative Council of the Province of Quebec for many years prior to his death in 1940.

Candidates for Carrel Scholarships must for at least one year prior to their application for admission to Queen's University or for at least

buried at the beginning of the second term. All students are encouraged to attend a twenty minute information session at the Student Awards Office prior to submitting a bursary application. A schedule of these sessions is available at the Student Awards Office. In the case of an extreme emergency where immediate assistance is required, students should contact the Student Awards Office.

Marian Catharine Webb Bursary Fund

The will of the late Marian Catharine Webb of Kingston provides for bursary assistance for women students over the age of twenty-five years. Preference is given to women who are either landed immigrants in Canada or daughters of landed immigrants. Applications for the Marian Webb bursaries shall be made in writing to the Marian Webb Bursary Committee in care of the Board of the Ban Right Foundation for Continuing University Education.

Academic Facilities and Student Services 69

The University Libraries

The library system at Queen's University consists of a central unit, the Douglas Library, 19 branches and three faculty libraries, of which one is the Education Library. Together these libraries contain over 1,000,000 volumes.

The Douglas Library building as well as housing the major holdings of the humanities and social sciences and the university archives, contains the administrative offices and other related library services.

For the purpose of library privileges students of the Faculty of Education are considered to be in the category of graduate students. Facilities which are available to graduate students and other researchers include study carrels, microfilm readers, photocopy equipment and bibliographic training courses. Holdings of other Ontario University Libraries, are made available through the interlibrary loans service.

Education Library

The Faculty of Education and the teaching profession of this area, are served by this library. The collection now consists of approximately 60,000 volumes, and 500 journals which include the major publications in the field. An important research resource is the collection of 120,000 documents on microfiche distributed by the Educational Resources Information Centre (ERIC) of the United States Department of Health, Education and Welfare. This collection grows at the rate of approximately 12,000 microfiches per annum. Computerized reference service (CARS) is also available to library patrons to facilitate specialist research requirements and information retrieval. The Resource Centre in the library houses a growing collection of audio-visual materials relevant to the curricula in the schools and in the Faculty.

The Computing Centre

The Queen's University Computing Centre provides computing services to meet the needs of education, research and administration. All academic computing is carried out on an IBM 3081 model C, running VM/CMS. The principal languages are FORTRAN, PASCAL and MATRYL. The primary data analysis tool is SAS. Mass storage on magnetic disk, and tape devices are also available to all users. All facilities are provided in a time-sharing environment. This environment does provide the capacity for on-line preparation and submission of batch jobs.

Administrative computing is provided on an IBM 4341 model group 2 running VM/S.

All services are provided in the sites in Jeffery Hall and Macintosh-Corry Hall, where advising offices are located. There are 10 semi-public sites throughout campus, totalling 240 terminals. Two of these semi-public sites are in Duncan McArthur Hall.

The Faculty of Education maintains 20 Apple computers, 14 ICONE, 18 Macintosh, 2 Commodore, and 2 Acorns. The majority of these computers are in the two computer rooms in the library complex, the Instructional Computing Room (B307) and the Computing Room (B118). The rest are in

The Writing Centre Located in a pleasant house at 140 Stuart Street, near the foot of University Avenue, the Writing Centre offers a range of free services to all students. Workshops on basic principles of effective writing, and occasionally on more specialized topics, are offered frequently during the fall and winter terms. Students may also meet with tutors on a one-to-one basis for help at each stage of the writing process, from the initial outline onwards. In addition, drop-in consultations are available at the Writing Centre at regular hours during the week; watch for announcements or phone Stella Garland at 545-2153 for further details.

The Writing Centre also houses books, handouts, tapes, and computer programs on writing and related issues.

(Faint, illegible text, likely bleed-through from the reverse side of the page)

- | | |
|--|--|
| Associate Boards of Education and Practicum Liaison Officers | Peel Board |
| Carlton Board | Mrs. L. McConigal |
| Mr. J. M. Beatty | Plainsboro CFB Board |
| Carlton R.C.S.S. Board | Mr. A. Bair |
| Mr. T. Murphy | Peterborough County Board |
| Dufferin-Peel R.C.S.S. Board | Mr. T. Carlton |
| Mrs. B. Easton | Peterborough Victoria Northumberland and Newcastle Board |
| Durham Board | Mr. P. L. Roach |
| Mr. B. R. Walker | Prescott and Russell Board |
| Durham Region R.C.S.S. Board | Mrs. M. Goodland |
| Mrs. M. Goodland | Mr. L. P. Higginson |
| Frontenac County Board | Prince Edward County Board |
| Mr. W. G. Anglin | Mr. F. Kinsella |
| Frontenac-Lanox & Addington Board | Renfrew County Board |
| Mr. P. Slack | Mr. R. Holmberg |
| Haliburton County Board | Renfrew R.C.S.S. Board |
| Mr. S. Baker | Mr. J. Stunt |
| Hastings County Board | Scarborough Board |
| Mrs. P. Cronkright | Mr. C. R. Mason |
| Hastings-Prince Edward R.C.S.S. Board | Simcoe Board |
| Dr. J. Brown | Mrs. J. Somerville |
| Kapuskasing Board | Stormont Dundas and Glengarry Board |
| Mr. D. Duchesne | Mr. H. K. MacLennan |
| Kingston CFB Board | Stormont Dundas and Glengarry R.C.S.S. Board |
| Mr. B. Metcalfe | Mr. P. Beaudette |
| Lanark County Board | Sudbury Board |
| Mr. G. W. Slinger | Mrs. P. Barber |
| Lanark Leeds and Grenville Board | Sudbury District R.C.S.S. Board |
| Mrs. Warnock | Mr. R. Hammond |
| Leeds and Grenville Board | The Board of Education for the City of Etobicoke |
| Mr. M. Beverley | Mr. R. S. Prentice |
| Lennox and Addington Board | The Board of Education for the City of North York |
| Mr. D. E. Thompson | Mr. H. Johnson |
| Metropolitan S.S. Board | Toronto Board |
| Mrs. B. Goldring | Mr. M. Neal |
| Northumberland and Newcastle Board | Trenton CFB Board |
| Mr. H. Peebles | Mr. F. Rose |
| Ottawa Board | Victoria County Board |
| Dr. M. K. McVey | Dr. D. Disney |
| Ottawa R.C.S.S. Board | York Region Board |
| Mr. G. Moore | Mrs. L. Routledge |

